

**OFFICIAL COORDINATION REQUEST FOR  
NON-ROUTINE OPERATIONS AND MAINTENANCE**

**COORDINATION TITLE-** 20JDA12 MOC Spill bay 2 attraction flow

**COORDINATION DATE-** 03 August 2020

**PROJECT-** John Day Dam

**RESPONSE DATE-** 13 August 2020

**Description of the problem-**

The current spill plan for JD from 15-31 August is for 20kcfs 24 hrs/day. The spill pattern during this time frame calls for TSW flow per the FPP spill pattern, which leaves no spill on the North end of the spillway near the North fish ladder entrance. JD fisheries requests 1 stop (1.6Kcfs) out of spill bay 2 for better attraction to the entrance of the North ladder.

Spill bay 2 is used at one stop from 1 Sept – 30 November for attraction flow to the North ladder per the FPP.

**Table 4.— Summary of 2020 summer target spill levels at lower Snake River and lower Columbia River projects.**

PROJECT	2020 SUMMER SPILL <sup>A</sup> (June 21/16 – August 14) (24 hrs/day)	2020 SUMMER SPILL <sup>A</sup> (August 15 – August 31) (24 hrs/day)
Lower Granite <sup>B</sup>	18 kcfs	SW flow or ~7 kcfs spill
Little Goose <sup>B</sup>	30%	SW flow or ~7 kcfs spill
Lower Monumental <sup>B</sup>	17 kcfs	SW flow or ~7 kcfs spill
Ice Harbor <sup>B</sup>	30%	SW flow or ~8.5 kcfs spill
McNary	57%	20 kcfs
John Day	35%	20 kcfs
The Dalles	40%	30%
Bonneville	95 kcfs	50 kcfs

**Table JDA-8. [pg 1 of 11] John Day Dam Spill Patterns with TSWs in Bays 18-19.**

JDA Spill Patterns with TSWs in Bays 18, 19 - # Gate Stops per Spillbay																				Total Stops (#)	Spill * (kcfs)
1 <sup>b</sup>	2	3	4	5	6	7	8	9	10	11	12	13	14	15	16	17	18 <sup>c</sup>	19 <sup>c</sup>	20 <sup>b</sup>		
																	TSW	TSW		0	19.4
																	TSW	TSW	1	1	21
																	TSW	TSW	1.5	1.5	21.8
	1																TSW	TSW	1.5	2.5	23.4
	1	1															TSW	TSW	1.5	3.5	25
	1	1														1	TSW	TSW	1.5	4.5	26.6
	1	1													1	1	TSW	TSW	1.5	5.5	28.2

**Type of outage required**

Additional spill is requested from spillbay 2 of one stop.

**Impact on facility operation**

Spill pattern would change. No change to ladder operations.

**Impact on unit priority**

None

**Impact on forebay/tailwater operation**

None

**Impact on spill**

Increased spill of 1.6kcfs at one stop from spillbay 2.

**Dates of impacts/repairs**

15 – 31 August

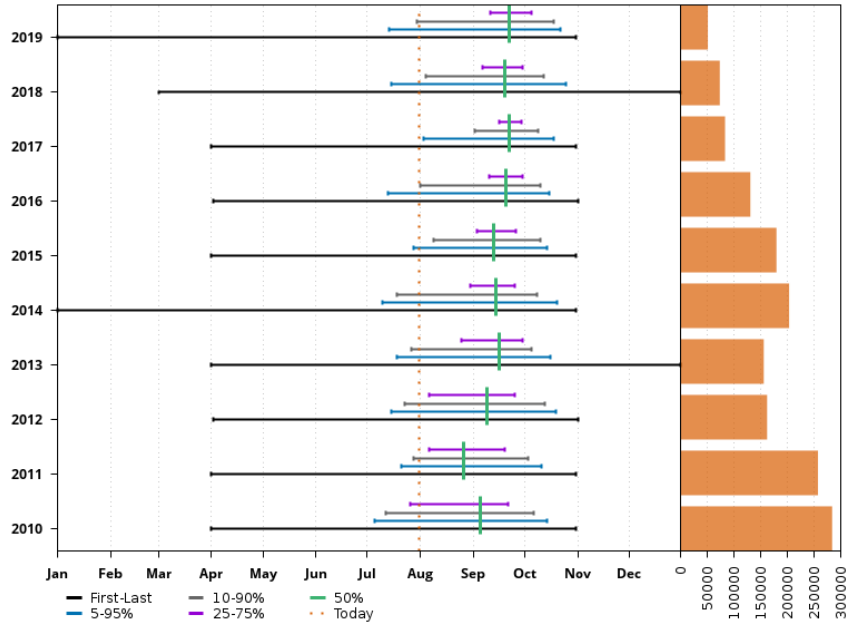
**Length of time for repairs**

N/A

**Analysis of potential impacts to fish**

1. 10-year average passage by run of the predominate species during the period of deviation to spill for adults and juvenile listed species, as appropriate for the proposed action and time of year

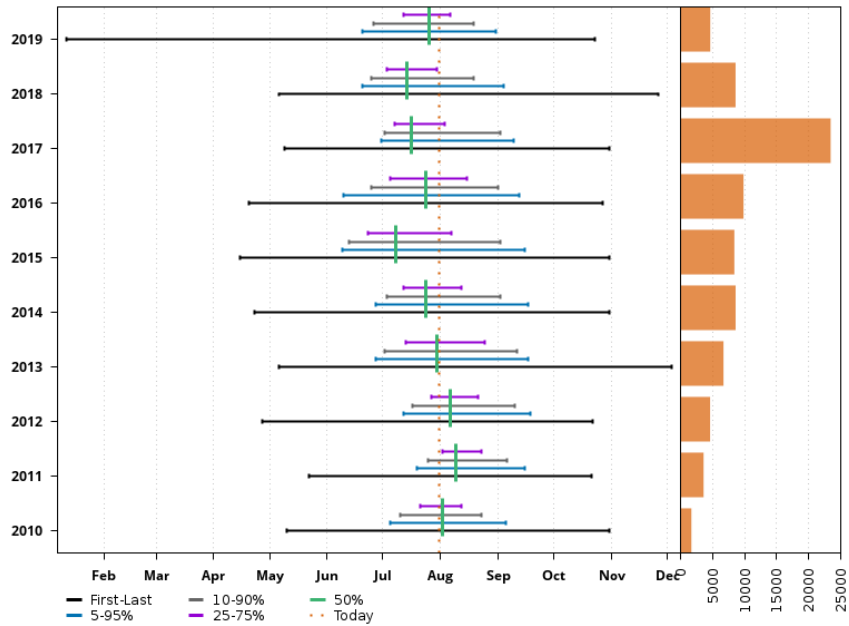
Historical Run Timing, 2010 - 2019  
 Adult Visual Counts Steelhead  
 John Day Dam, 1/1 - 12/31



www.cbr.washington.edu/dart

# Passage  
 30 Jul 2020 14:00:27 PDT

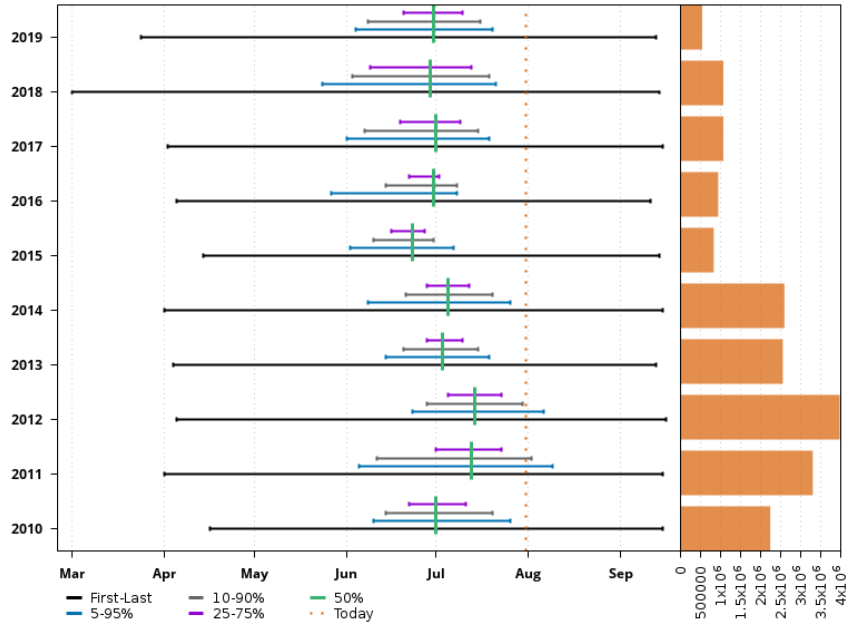
Historical Run Timing, 2010 - 2019  
 Adult Visual Counts Lamprey  
 John Day Dam, 1/1 - 12/31



www.cbr.washington.edu/dart

# Passage  
 30 Jul 2020 14:05:39 PDT

Historical Run Timing, 2010 - 2019  
Smolt Index Subyearling Chinook  
John Day Dam, 1/1 - 12/31



www.cbr.washington.edu/dart

# Passage  
30 Jul 2020 14:06:44 PDT

2. Chinook, steelhead, and sockeye are all near the 10 year average and lamprey are passing below the 10 year average.
3. Sub-yearling Chinook salmon will not be affected by this action and would benefit by an additional passage route besides the TSW's. Adult salmonids and Lamprey will benefit from the added attraction flow to the North ladder.

**Summary statement - expected impacts on:**

**Downstream migrants**

Minimal impact from this deviation to spill is expected to downstream migrants.

**Upstream migrants (including Bull Trout)**

Increased attraction flow will benefit upstream migrants at the North fish ladder.

**Lamprey**

Same as above

## Comments from agencies

### BPA

-----Original Message-----

From: Bettin, Scott W (BPA) - EWP-4 [mailto:swbettin@bpa.gov]  
Sent: Monday, August 03, 2020 12:43 PM  
To: Kovalchuk, Erin H CIV USARMY CENWP (USA)  
<Erin.H.Kovalchuk@usace.army.mil>  
Subject: [Non-DoD Source] RE: FPOM: Official Coordination 20JDA12 MOC  
Spill Bay 2 attraction flow

If we ran without the attraction spill from bay 2 how long would it be to know if we are having an issue? I was thinking implement the FOP and react once we see an issue? -s

FPOM August minutes:

8.12. 20JDA12 MOC Spill bay 2 attraction flow - The new summer spill pattern did not include any additional attraction flow to the north ladder. Lorz thinks it is a good idea. Bellerud agreed and would not want to be without spill without modeling results. From September - Nov there is 1.6kcfs from bay 2 during daylight hours. Van Dyke doesn't think that a decision can be made here because the agreement was made from the flex spill work group. The plan is to add the one stop during daylight hours not to try to move spill from the TSW. Bettin agreed to this spill. Van Dyke said he would be okay with the addition but was trying to stick to the agreed upon decision. Wright needs agreement from Askelson to change the FPP patterns. Mackey would like the FPP changed like the pattern from BON where 1 and 18 are on for adult attraction. FPOM concurred.

**Final coordination results** – Spill will increase by one stop at bay 2 during daylight hours. A teletype was sent out on 14 August 2020.

**After Action update** – The spill took place as coordinated in the teletype.

Please email or call with questions or concerns.

Thank you,

Erin

Erin Kovalchuk  
NWP Operations Division Fishery Section  
Columbia River Coordination Biologist  
[Erin.H.Kovalchuk@usace.army.mil](mailto:Erin.H.Kovalchuk@usace.army.mil)

And

Eric Grosvenor  
Fish Biologist  
John Day Dam

[Eric.G.Grosvenor@usace.army.mil](mailto:Eric.G.Grosvenor@usace.army.mil)